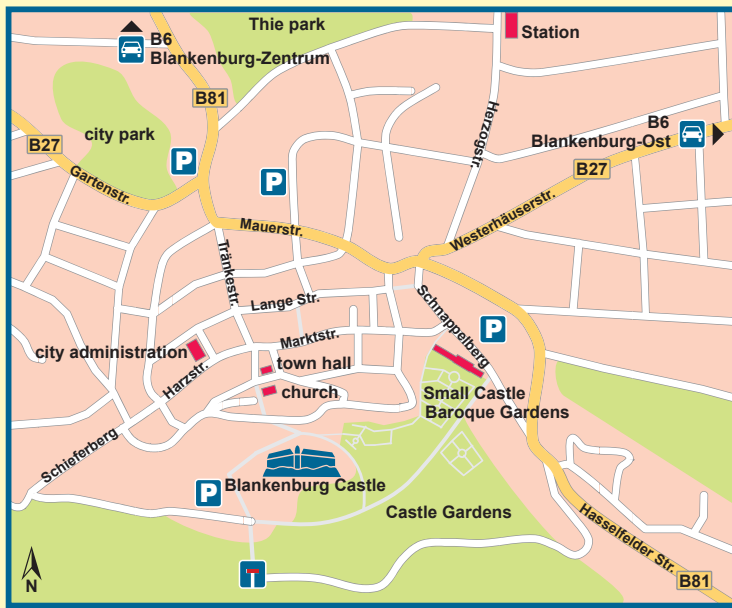


Blankenburg Castle

A region's crown



Rettung Schloss Blankenburg e.V.
 (registered association, nonprofit organization)



CONTACT

Rettung Schloss Blankenburg e.V.
 Großes Schloss 1
 38889 Blankenburg (Harz) / Germany
 Phone 03944 3676223
 Fax 03944 3676224
 info@rettung-schloss-blankenburg.de | www.rettung-schloss-blankenburg.de

DONATION ACCOUNTS

Harzsparkasse (NOLADE21HRZ)
 IBAN: DE71 8105 2000 0300 0943 02
 Harzer Volksbank eG (GENODEF1QLB)
 IBAN: DE72 8006 3508 4154 6032 00

OPENING HOURS, GUIDED TOURS, VISITING THE INTERIOR

Please note that **visiting the interior is only possible within a guided tour**. Those take place from March to December on **Saturday at 2 and 3 pm** or at all times on a virtual tour online from wherever you want. Guided tours outside regular hours **can be reserved**. Restrictions due to construction work or events are possible.

From March to December the **gate to the castle is opened from Tuesday to Sunday from 10 am to 4 pm**. The **café and the shop** are opened on **Saturday from 2 to 4 pm**.

From January to February the whole castle is closed.

WEDDING CEREMONIES

Celebrate your wedding at Blankenburg Castle which is official outpost of the registry office of the city of Blankenburg.

For more informations visit: www.heiraten.im.schlossblankenburg.de

INDIVIDUAL ARRIVAL

Blankenburg is located on the northern edge of the Harz Mountains in the administrative district Harz. Take the highway A 36 (exit Blankenburg-Mitte or Blankenburg-Ost), B 27 or B 81 to Blankenburg. Follow the tourist signs „Großes Schloss“, where you can find sufficient parking spaces; walk through the castle gardens for about 10 minutes. A limited number of parking spaces is located directly on the castle grounds: Drive into the Old Town of Blankenburg and through Harzstraße, Schieferberg and Friederike-Caroline-Neuber-Straße up to the castle. Or take the train to Blankenburg (Harz); about 20 minutes walk from the station.

Cover-Photo: Marko S. Schüren



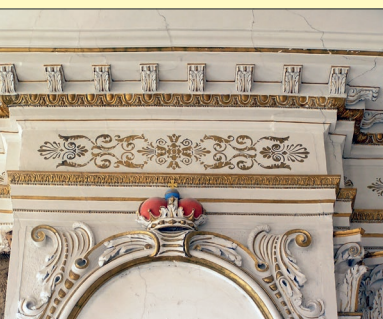


Castle view from the Baroque Gardens

The town of Blankenburg is located in the heart of the administrative district Harz. Not far from which side or how one comes to town, Blankenburg Castle can be beheld. It is monumentally located at an altitude of 337 meters (sea level) above the town and is widely visible in the northern countryside of the Harz Mountains.

The first chronical reference of the „castrum blankenburg“ was in 1123. The Castle was owned by Duke Lothar of Saxony, who became king and emperor in 1125.

Emperor's hall



The monument gained regional historical importance as castle and palace of the Counts of Regenstein-Blankenburg (1133-1599) and as a residence of the Dukes of Brunswick-Lüneburg (1599-1945). The years 1714 to 1731 are considered as the golden age, when Duke Ludwig Rudolf held court here and there existed a direct connection to the dynastic imperial courts in Vienna and St. Petersburg.

In 1708 Ludwig Rudolf married his oldest daughter Elisabeth Christine to the future Austrian Emperor Charles VI. Elizabeth Christine was mother to the Austrian Empress Maria Theresa.

The second oldest daughter Charlotte Christine Sophie was married to the Russian Tsarevich Alexei in 1711. Her son Peter II. ascended to the Czar's throne at the mere age of twelve. The youngest daughter Antoinette Amalie married Duke Ferdinand Albert II. One daughter from this marriage was to marry Frederick the Great. These high-ranking international connections required a

representative holding of court from Rudolf Ludwig. Therefore the existing Renaissance chateau was rebuilt by the architect Hermann Korb into a magnificent Baroque Ensemble. The Castle Gardens, parks and wildlife enclosure still belong to the castle complex.

Therefore Blankenburg Castle is one of the few authentic examples of the traditional Brunswick-Guelphic culture of the 18th century. Duke Ernst August and Viktoria Luise took the castle as a „second home“ after their accession to the throne in Brunswick and at the end of the monarchy in 1918 as their residence until 1945.

In the Gray Hall of the castle the daughter Friederike, later Queen of Greece mother of the former Queen of Spain and grandmother of the actual King of Spain, was baptized in 1917.

The Wealth of great architecture at the castle suffered somewhat due to its being left vacant from 1992. The nonprofit organization Save Blankenburg Castle is striving since 2005 to preserve the threatened monument, which is still at an acute risk in many places – especially due to infestation with dry rot.



Duke Ludwig Rudolf

Concepts for a sustainable and monumental use are being developed at the same time. Since 2011 the castle theater has been re-used and since 2013 one can also get married in Blankenburg Castle.

The association was honored in 2014 by the Presidium of the German National Committee for the Protection of Monuments for its long-standing and voluntary service.

Castle courtyard

